



## Sky Villa With Endless Sea & Sunset Views

Dubai, United Arab Emirates, Palm Jumeirah, Six Senses Residences The Palm

**AED 38,100,000**

Ref: S-693



FIELD TYPE

**For Sale**



STATUS

**Sold / Request Similar**



TYPE

**Villa**



BEDROOMS

**4**



BATHROOMS

**5**

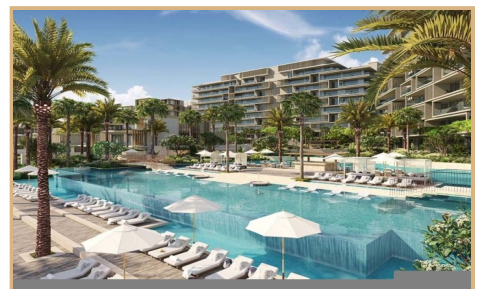
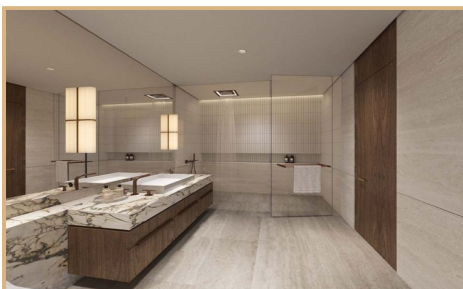
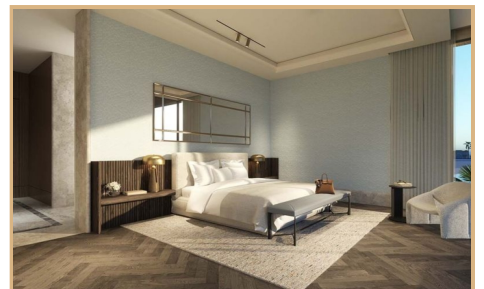
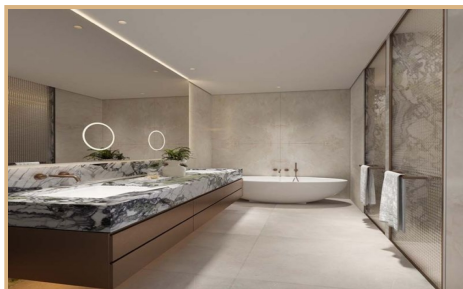
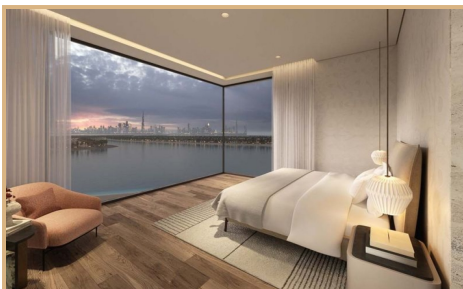
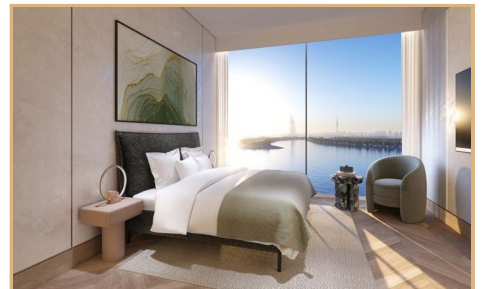


BUILT-UP AREA

**6454 sq ft**



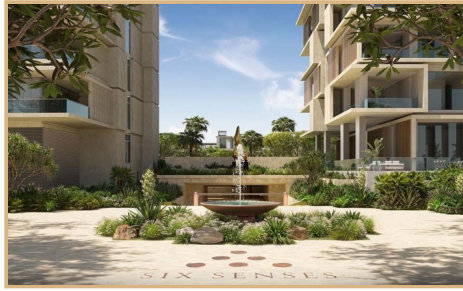
# Gallery





TEREZAESTATES.COM

BUY | SELL | RENT





## Property Description

**Location:** Dubai, United Arab Emirates, Palm Jumeirah, Six Senses Residences The Palm

Tereza Estates is delighted to present this Impeccable Duplex Sky Villa with Panoramic Open Sea & Sunset Views in The Six Senses Residences, The Palm, Dubai located on the serene West Crescent of Palm Jumeirah with direct access to its private pristine beach with crystal clear waters of the Arabian Sea.

This beautifully designed four bedroom luxury sky villa comprises of a massive built up area of 6,454 sq.ft. with absolutely impeccable finishes and interior touches where nature is the main inspiration for the architectural narrative of the Penthouses at Six Senses Residences, The Palm, Dubai.

Combining elements of natural stones, wooden floorings and other precious stone material details on finishes that include massive marble kitchen islands with fully integrated branded kitchen appliances or beautifully designed bathrooms with lots of natural light, floor to ceiling windows with ceiling heights of 3,2 meters embracing the mesmerizing views of the sea and Dubai's impressive Skyline architecture, ensuring bright and light feel in every penthouse or a sky villa throughout the resort that spreads over a massive area of 75,000 square meters offering its residents a true luxury beachfront getaway resort feel home with incomparable lifestyle and wellness facilities that include the infamous Six Senses Spa with wide range of wellness treatments helping you to reconnect to all your senses, while retaining the intimacy of a spectacular home for a lifetime at the most demanded address of Dubai - The Palm Jumeirah.

Residential owners and guests can benefit from beautifully landscaped lush green gardens throughout the completely car-free resort, Six Senses Veggies and Fruits organic garden and other lifestyle facilities that include private beach and infinity swimming pool as well as massage circuit pool, gym squash court, wellness circuit, shared business hubs and meeting rooms, residents lounges, fine dining restaurants throughout the resort and many others.

Six Senses is an exclusive members community with worldwide resorts across 17 different countries including destinations like Uluwatu on Bali, tropical Island of Fiji, the favourite Courchevel of French Alps, Douro Valley in Portugal, the magical island of Ibiza, as well as historical city of Rome, Six Senses Laamu in Maldives, Shahrut in Israel, Butan, Krabey Island, Qing Cheng Mountain (part of UNESCO World heritage), Fort Barwara, Vana and many others, with the closest one to Dubai being beloved Zighy Bay in Oman.

Trakheesi Permit #1097311822

Estimated Completion Date: Q4 2024



## Key Features

- ✓ For Sale
- ✓ Built in Wardrobes
- ✓ Maid Service
- ✓ Private Pool
- ✓ View of Landmark
- ✓ Central A/C
- ✓ Maids Room
- ✓ Security
- ✓ Floor Area : 6454 sq ft
- ✓ Children's Play Area
- ✓ Pets Allowed
- ✓ Shared Gym
- ✓ Walk-in Closet
- ✓ Concierge
- ✓ Private Garden
- ✓ Partly furnished
- ✓ Covered Parking
- ✓ Private Gym
- ✓ Shared Spa
- ✓ Balcony
- ✓ Kitchen Appliances
- ✓ Private Jacuzzi

