

## Gorgeous Three Bedroom With Sea Views

**AED 10,430,000**

Ref: S-1025

**Muraba Residences, Palm Jumeirah, Dubai**

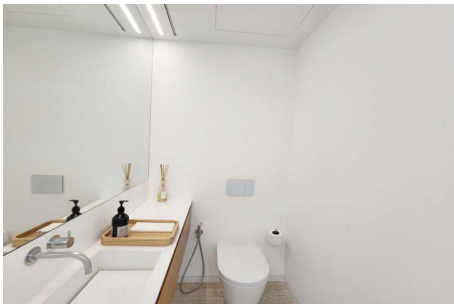
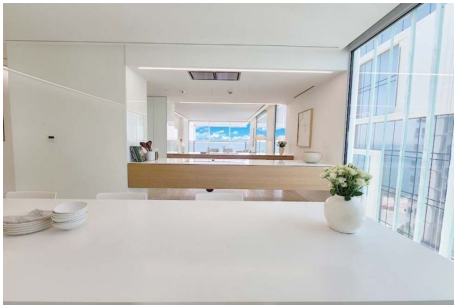
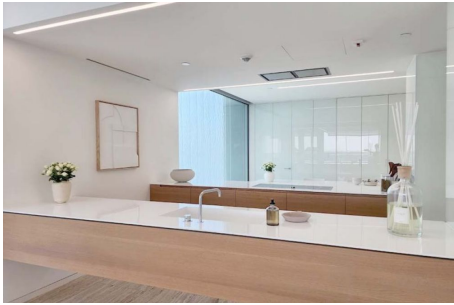
-  Field Type: For Sale
-  Property Status: Ready to Move In
-  Property Type: Apartment
-  Number of Bedrooms: 3
-  Number of Bathrooms: 4
-  Area: 2387 sq ft



TEREZAESTATES.COM

BUY | SELL | RENT

# Gallery



TEREZAESTATES.COM  
BUY | SELL | RENT

# Property Description

**Location:** Muraba Residences, Palm Jumeirah, Dubai

Tereza Estates is pleased to present this Gorgeous Bright Three Bedroom Apartment with Breathtaking views of Burj Al Arab & Downtown Skyline as well as Royal Atlantis, Marina Skyline and The Dubai Eye Views accross the Endless Arabian Sea with its spacious layout of 2387 sq.ft. where outdoor - indoor living space seamlessly blends and impressive architecture highlights the contrast of beautiful finishes in light clean and subtle colour palette that compliment that shimmering sunshine bliss on turquoise waters of The Arabian Sea.

This elegantly designed luxury three bedroom apartment comprises of multiple outdoor and indoor entertainment areas, including living area with its own terrace overlooking the sea, beautifully designed open plan chef's kitchen with seemlessly fitted kitchen appliances by Gaggenau and spacious dining area with lot of seamless cabinets and storage space. All of the terraces of this apartment are offering absolutely spectacular views of the sea and admirable landmarks of Dubai including the master suite with views worth to wake up to over the Marina Skyline. All of the three bedrooms are ensuite with well designed bathrooms offering both spacious walkin rainshowers by Lagares (established in 1918) as well as comfortable bathtub for ultimate home spa feeling after a long day. Built-in wardrobes that offer truly enough of storage space even for the most demanding of us with endless designer closet collections stored beautifully with integrated lightening and organised divisions by an excellent brand Rimadesio with superb quality of fixtures. This luxury penthouse apartment is very bright and offers light and airy feel also thanks to lightning fixtures well thought through by italian leading brand Panzeri (since 1947) with their eco compatible production plant worldwide, that is by now almost entirely powered by solar energy.

Muraba Residences is private and peaceful, considered an architectural gem designed by Pritzker award winning RCR Architects with its unique minimal architectural design, yet attention to detail crafted to perfection with carefully selected finishing materials, as travertine flooring with a parquette effect, elegant and functional internal doors by L'invisible, seamlessly built-in kitchen appliances by Gaggenau, impressive kitchen islands, floor to ceiling pocket windows by SKY FRAME that make the most of the Dubai skyline and sea views. Outdoor glass design feature simultaneously restricts the views into the apartment from outside as well protects from sun with extra layer for keeping your apartment cool without the excessive need of A/C. Its design is exemplary, with a minimalist outlook. Given its considerable visual aesthetic, the development also has a connection with the environment. Attention is paid to the degree of light, clean lines, high end interiors and open spaces throughout the apartment, from the kitchen all the way to the dining, living and other entertainment areas. The gym also hosts some spectacular views of the skyline and 50m long swimming pool that invites to implement that healthy morning routine is just another beautiful part of what Muraba Residences offers to its home owners. Includes also separate ladies and gentlemen spa with sauna and steam room as well as indirect private beach access at the beautiful white sandy beach of east crescent with its designated space for Muraba Residents only.

This apartment is being offered as Ready To Move In/Vacant On Transfer.

Trakheesi Permit #1340880662



**TEREZAESTATES.COM**

BUY | SELL | RENT

# Additional Info

For Sale	Floor Area : 2387 sq ft	Beach Access
Sea View	Burj Al Arab View	Royal Atlantis View
24/7 Security	Gym & Swimming Pool	Spa & Vitality Pool
Pet Friendly	Maids Room	Built in Wardrobes
Laundry Room	Spacious Terraces	Fully Fitted
Gaggenau Kitchen Appliances	Chef's Kitchen & Prep Kitchen	Central A/C
Covered Parking	Children's Play Area	View of Water

## Amenities



**TEREZAESTATES.COM**

**BUY | SELL | RENT**

Mobile: **+971 585 365 111**

Email: [hello@terezaestates.com](mailto:hello@terezaestates.com)

TEREZA REAL ESTATE LLC

ORN: 32523, BRN: 35616

Dubai, United Arab Emirates

<https://www.terezaestates.com>