

Penthouse with Spectacular Views, Private Pool and Massive Terrace

AED 91,582,000

Ref: S-1112

Orla Infinity, Dorchester Collection, Palm Jumeirah, Dubai

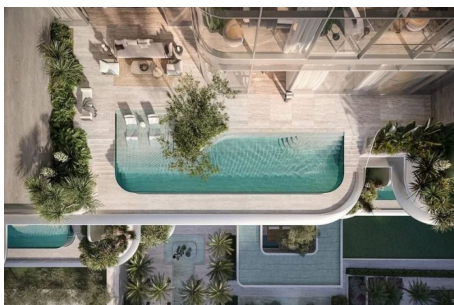
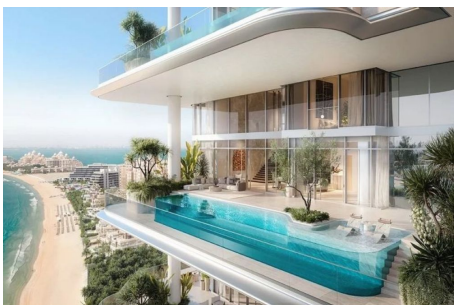
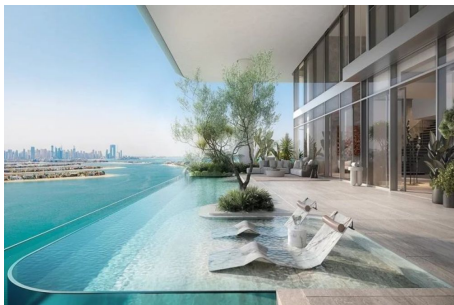
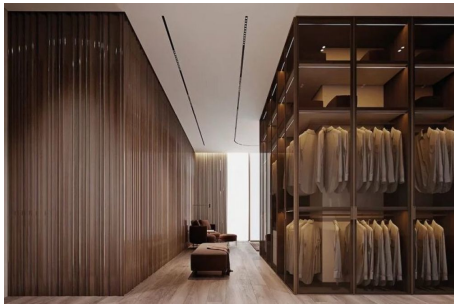
-  Field Type: For Sale
-  Property Status: Sold / Request Similar
-  Property Type: Penthouse
-  Number of Bedrooms: 4
-  Number of Bathrooms: 6
-  Area: 8392 sq ft



TEREZAESTATES.COM

BUY | SELL | RENT

Gallery



TEREZAESTATES.COM
BUY | SELL | RENT

Property Description

Location: Orla Infinity, Dorchester Collection, Palm Jumeirah, Dubai

Tereza Estates is pleased to present this Latest Contemporary Masterpiece of a Luxury Four Bedroom Duplex Apartment for sale in Orla Infinity by Omniyat with its massive size of over 8392 sq.ft. where outdoor - indoor living space blends seamlessly with the views of the turquoise Arabian Sea and beautiful skyline of Dubai enjoyable from the comfort of your spacious terrace with massive curved private infinity swimming pool with acrylic sea through glass and triple outdoor height ceilings of upto 8 meters. The terrace spreads out to 3135 sq.ft. and offers absolutely breathtaking views of Dubai Marina Skyline, The Royal Atlantis, The Atlantis and the picturesque Fronds filled with beautiful private villas, situated on the currently most demanded address in the world - The Palm Jumeirah, Dubai, both Orla and Orla Infinity offer truly lifestyle beyond compare.

Fully fitted and finished to the highest quality by collaboration of some of the very best names in The Architectural world as Foster & Partners and Yodezeen Architects, with unique interior touches with a world-class design that provokes luxury and aesthetics, embraces the brightness and liveness of living spaces with its floor to ceiling windows with ceiling heights of 3,2m and upto 6,5 meters double height ceilings in the living areas.

Beautifully designed contemporary and elegant outdoor terraces in every apartment with its own infinity swimming pool allows you to enjoy the breathtaking views of sunsets at the sea and Dubai's admirable skyline charm. Apart from fully ensuite four bedrooms with walk in closets, includes also home office, family area, preparation kitchen as well as show kitchen and staff/maids room. Every apartment includes four allocated parking spaces.

ORLA & ORLA INFINITY truly contains an abundance of resident-only experiences and facilities at your fingertips, all

managed by The Dorchester Collection, that give you a five star experience at the comfort of your home.

This iconic luxury development Orla Infinity is spreading over 16,600 sq.m. of beachfront resort - like lifestyle at the discretion of residential community where you can enjoy the best that Dubai's lifestyle has to offer. Orla Infinity comprises of 20 residences only compared to 91 Residences in Orla spreaded over another beachfront resort like plot of over 29,800 sq.m. that include also two beachfront mansions as well as three Sky Palaces, apart from very well designed spacious two, three and four bedroom apartments.

Palm Jumeirah is an exclusive destination intimately connected to the sea, offering unparalleled beauty. Nearby, you'll discover Dubai's finest restaurants, clubs, and beach resorts, providing a world-class experience. The wonders of Dubai are easily accessible, ensuring that every captivating sight is within your reach. Situated on a 16,610 sq. m. beachfront plot at the apex of the Palm's crescent, this prime position offers uninterrupted 270° views, encompassing Dubai's stunning skyline and the turquoise waters of the Arabian Gulf.

If you would like to know more about Orla Infinity, please contact us on **+971585365111** or fill an inquiry form with your details to request a call back.

Trakheesi Permit #0577517968 ; Estimated Completion Date: Q1 2027



TEREZAESTATES.COM

BUY | SELL | RENT

Additional Info

For Sale	Floor Area : 8392 sq ft	Dorchester Collection Managed
Designed by Foster & Partners	Interior by Yodezeen Architects	Massive Outdoor Terrace
Private Swimming Pool	Marina Skyline View	Royal Atlantis View
Beachfront	Private Beach	Concierge
Exclusive 20 Residences Only	24/7 Security	Maids Room
Walk-In Closet	Fully Fitted	

Amenities

Private Swimming Pool	Private Beach	Concierge
Maids Room	Private Pool	Shared Gym
Shared & Private Spa	Children's Play Area	Covered 4 Parkings
Pets Allowed	Pets Spa	