



## Sky Terrace Penthouse with Private Pool in Prestigious Marasi Bay

Dubai, United Arab Emirates, Downtown & Burj Khalifa District, Vela, Dorchester Collection

**AED 93,414,800**

Ref: S-1103

Field Type

FIELD TYPE

**For Sale**

Property Status

STATUS

**Featured**

Property Type

TYPE

**Penthouse**

Bedrooms Icon

BEDROOMS

**4**

Bathrooms Icon

BATHROOMS

**6**

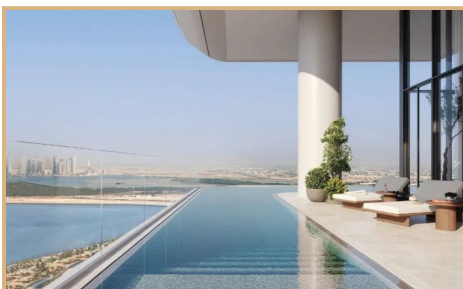
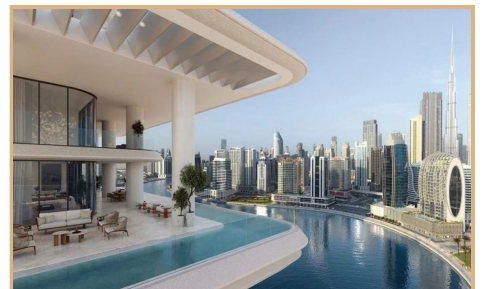
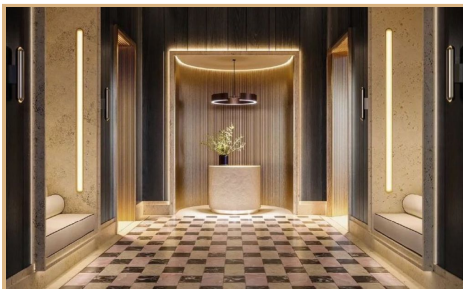
Area Icon

BUILT-UP AREA

**11727 sq ft**



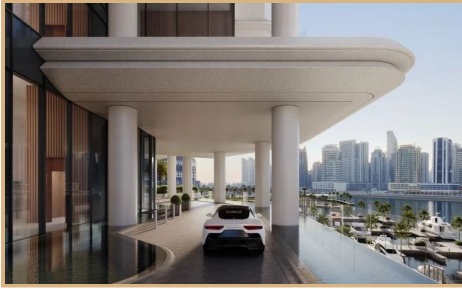
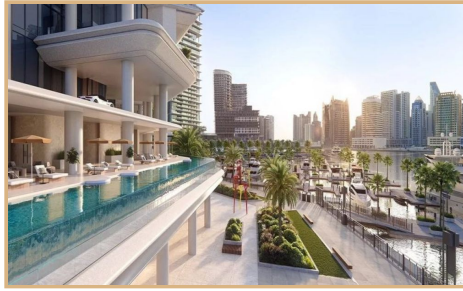
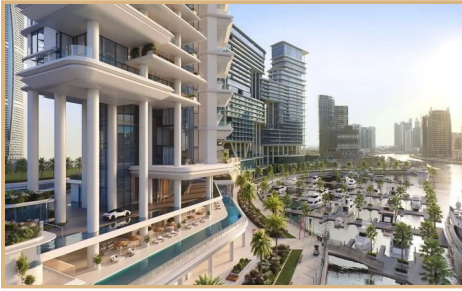
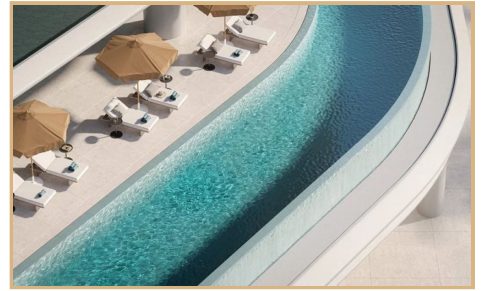
# Gallery





TEREZAESTATES.COM

BUY | SELL | RENT





## Property Description

**Location:** Dubai, United Arab Emirates, Downtown & Burj Khalifa District, Vela, Dorchester Collection

Tereza Estates is delighted to present this Sky Terrace Penthouse with Private Pool in Prestigious Marasi Bay for sale in The Vela Residences by Dorchester Collection Dubai, situated in the prestigious, yet peaceful and most sought-after address of Downtown & The Burj Khalifa District - The Marasi Bay & Marasi Marina that has been recently acquired entirely by the infamous pioneer of luxury new developments in Dubai - Omniyat. Marasi Bay is located on the Dubai Water Canal with its dedicated yacht berths and variety of fine dining options within your exquisite residence that is located on a waterfront promenade where you can enjoy daily morning walks or outdoor cycling while admiring the impressive architecture of Dubai's Skyline and its architectural wonders.

Vela Residences by Dorchester Collection is inspired by its previous neighbouring ultra luxury residences - The Lana Residences by Dorchester Collection with its signature architectural style done by collaboration of some of the very best names in The Architectural world as Foster & Partners, fully furnished, designed and fitted with collaboration of the exquisite world renowned chic design duo Gilles & Boissier with their signature touch of timeless elegance and exclusivity in statement design pieces over your residence. With unique interior touches with a world-class design that provokes luxury and aesthetics, embraces the brightness and liveness of living spaces with its floor to ceiling windows with ceiling heights of 3,2m and upto 6,5 meters double height ceilings in the indoor-outdoor living and entertainment areas. The spacious living areas are bathed in natural light, providing a warm and welcoming ambiance. Top-tier materials and meticulous attention to detail are evident in every corner. Residents can savor the stunning vistas through expansive floor-to-ceiling windows, seamlessly connecting the indoors with outdoors and its bustling cityscape.

This Prestigious Luxury Sky Terrace Penthouse with Private Pool Marasi Bay includes beautifully designed contemporary elegant outdoor terrace that offers over 7265 sq.ft. of enormous outdoor space with its own infinity edge pool, that allows you to enjoy the breathtaking views of sunsets at The Marasi Bay and Dubai's admirable skyline charm as the city lights up its night glance including the all time loved, signature Burj Khalifa.

Indoor area spreads over a massive size of 4461 sq.ft. making this an indoor outdoor total 11727 sq.ft. of a luxury waterfront residence in the heart of Dubai. Apart from fully ensuite four bedrooms with walk in closets, includes also multiple indoor and outdoor entertainment areas, preparation kitchen as well as show kitchen and staff/maids room. This apartment includes three allocated parking spaces leading directly to your own private lift lobby for an enhanced definition of a private lifestyle residential marvel, fully managed by The Dorchester Collection.

Vela Residences by Dorchester Collection are synonym to sophisticated lifestyle experience and comfort oriented luxury living, comprising of only 38 residences spread over two towers - North Tower reaching height of 90m, and the South Tower reaching all the way to 150m. Its previous neighbouring ultra luxury residences - The Lana Residences by Dorchester Collection similarly comprise of 39 exclusive residences only, keeping this an address to be accessible to selected few only.

Residents of Vela Residences by Dorchester Collection and Lana Residences by Dorchester Collection can both enjoy a host of world-class amenities, including a well-equipped fitness center, a rejuvenating spa, infinity edge swimming pool with beautifully landscaped resort like areas that offer a retreat from the urban hustle while still residing in the heart of it. Vela Residences by Omniyat is a sanctuary for those who seek a harmonious blend of luxury yet busy urban living, redefining the very essence of high-end residential lifestyle experience in Dubai. Additionally residents of Vela Residences by Dorchester Collection and Lana Residences by Dorchester Collection can both benefit from complimentary beach access for residents only at another architectural gem developed by Omniyat at Palm Jumeirah, Dubai - The One Palm.



TEREZAESTATES.COM

BUY | SELL | RENT

If you would like to know more about Vela Residences in Business Bay, please contact us on **+971585365111** or fill an inquiry form with your details to request a call back and we will be looking forward to arrange a private presentation for you along with answering any questions that you may have about your future luxury lifestyle home.

Estimated Completion Date: Q4 2026

Trakheesi Permit #: 0203960140



## Key Features

- ✓ For Sale
- ✓ Floor Area : 11727 sq ft
- ✓ Dorchester Collection managed
- ✓ Designed by Foster & Partners
- ✓ Interiors by Gilles & Boissier
- ✓ Private Infinity-Edge Lap Pool
- ✓ Spacious Terrace
- ✓ Double Height Ceilings
- ✓ Show Kitchen & Prep Kitchen
- ✓ 5 Star Experiences At Home

## Amenities

- ✓ Main VIP & Marina Lobby
- ✓ Infinity-Edge Lap Pool
- ✓ Triple-Height Gym
- ✓ Doorman & Porter Services
- ✓ Spa & Salon
- ✓ Pets Spa
- ✓ Kids Play Area
- ✓ Cinema Room
- ✓ Meeting Rooms & Lounge
- ✓ 24/7 Concierge
- ✓ Housekeeping & Maintenance
- ✓ Bespoke In-Residence Catering
- ✓ Dining Events & Functions
- ✓ Floristry Services
- ✓ Valet Parking
- ✓ 24/7 Premium Security
- ✓ Hotel Facilities at The Lana
- ✓ Dorchester Collection
- ✓ Beach access at The One Palm

