



TEREZAESTATES.COM

BUY | SELL | RENT



## One Bedroom Apartments in Soulever by Beyond

Dubai, United Arab Emirates, Maritime City, Soulever by Beyond

**Starting Price AED 3,091,000**

Ref: S-1284

Field Type

FIELD TYPE

**For Sale**

Property Status

STATUS

**Featured**

Bedrooms Icon

BEDROOMS

**1**

Bathrooms Icon

BATHROOMS

**2**

Area Icon

BUILT-UP AREA

**848 sq ft**

Terrace Icon

TERRACE

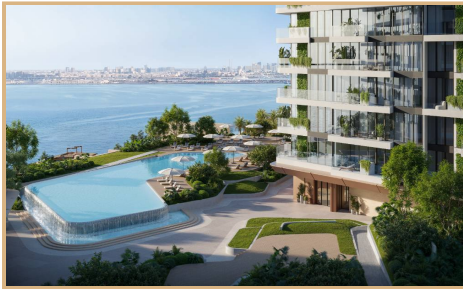
**150 sq ft**



TEREZAESTATES.COM

BUY | SELL | RENT

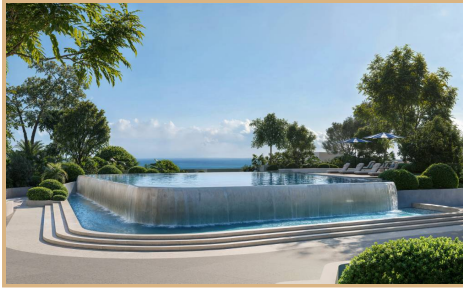
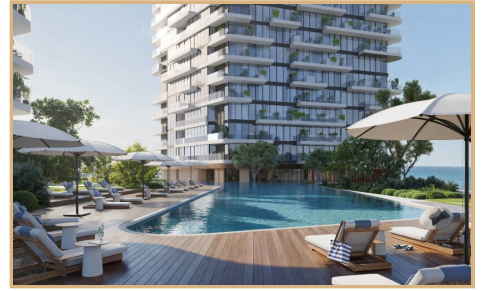
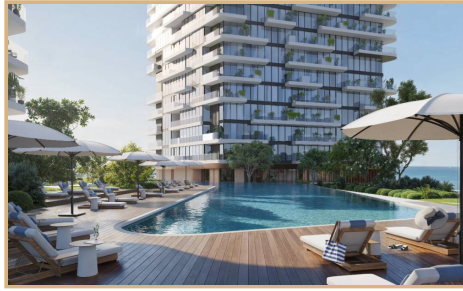
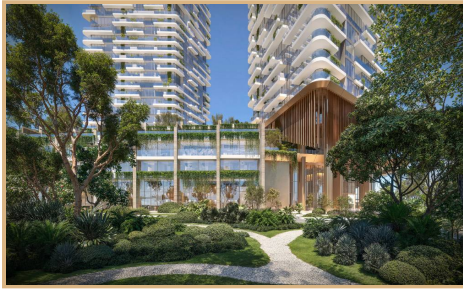
# Gallery





TEREZAESTATES.COM

BUY | SELL | RENT





TEREZAESTATES.COM

BUY | SELL | RENT

## Property Description

**Location:** Dubai, United Arab Emirates, Maritime City, Soulever by Beyond

Tereza Estates proudly presents Soulever by Beyond, a striking new waterfront address in Dubai Maritime City, where contemporary design, panoramic sea views, and elevated urban living converge in one of Dubai's most strategically positioned coastal districts. Rising along the shoreline between Port Rashid and historic Dubai, Soulever by Beyond captures uninterrupted views of the Arabian Gulf and the city skyline. The development reflects Beyond's signature architectural language — clean lines, refined materials, and thoughtfully curated interiors designed to maximize light, space, and flow. The project offers a collection of modern luxury residences with spacious layouts and expansive terraces, creating seamless transitions between indoor elegance and open-air waterfront living. Interiors are designed with premium finishes, contemporary kitchens, and high-quality detailing that embody understated sophistication.

Residents benefit from a carefully curated selection of lifestyle amenities, including a resort-style swimming pool, fully equipped fitness center, landscaped leisure areas, and dedicated social spaces designed for relaxation and connection. The waterfront promenade and marina surroundings enhance the daily living experience, offering a dynamic yet tranquil environment. Located minutes from Sheikh Zayed Road, Soulever by Beyond ensures effortless access to Downtown Dubai, DIFC, Jumeirah, and Dubai International Airport, making it ideal for both end-users and investors seeking strong rental demand and long-term capital appreciation within a central waterfront setting. Soulever by Beyond represents a compelling opportunity to own a contemporary luxury residence in Dubai Maritime City — a district rapidly evolving into one of Dubai's most desirable waterfront communities.

If you would like to know more about Soulever by Beyond at Dubai Maritime City, please contact us at [+971585365111](tel:+971585365111) or fill an inquiry form with your details to request a call back and we will be looking forward to arrange a private presentation for you along with answering any questions you may have about your future luxury waterfront home.

Trakheesi Permit #0762384517; Estimated Completion Date: Q1 2029

Payment Plan: 50% during construction / 50% on completion



TEREZAESTATES.COM

BUY | SELL | RENT

## Key Features

- ✓ For Sale
- ✓ New Development
- ✓ Breathtaking Sea Views
- ✓ Outdoor Activities
- ✓ Fully Fitted Apartments
- ✓ Maid's Room
- ✓ Floor Area : 848 sq ft
- ✓ Waterfront Community
- ✓ Forest Views
- ✓ 1-4 Bedroom Apartments
- ✓ High-End Finishes
- ✓ Wellness Focused Community
- ✓ Beach Access
- ✓ Greenery & Forest
- ✓ Infinity Pools
- ✓ Floor To Ceiling Windows

## Amenities

- ✓ Wellness Focused Community
- ✓ The Clubhouse
- ✓ Spa & Treatment Rooms
- ✓ Games Room
- ✓ Children's Play Area
- ✓ Landscaped Gardens
- ✓ Concierge
- ✓ Yoga Room
- ✓ Cinema Room
- ✓ Pets Allowed
- ✓ Infinity Pool
- ✓ State Of The Art Gym
- ✓ Welcome Lobby Lounge
- ✓ Library



TEREZAESTATES.COM

BUY | SELL | RENT

**Mobile: +971 585 365 111**

**Email: [hello@terezaestates.com](mailto:hello@terezaestates.com)**

TEREZA REAL ESTATE LLC

ORN: 32523, BRN: 35616

Dubai, United Arab Emirates

**<https://www.terezaestates.com/public>**