



Full Floor Presidential Penthouse Astonishing View

Dubai, United Arab Emirates, Palm Jumeirah, Serenia Living

AED 88,000,000

Ref: S-683

Field Type

FIELD TYPE

For Sale

Property Status

STATUS

Sold / Request Similar

Property Type

TYPE

Penthouse

Bedrooms Icon

BEDROOMS

4

Bathrooms Icon

BATHROOMS

6

Area Icon

BUILT-UP AREA

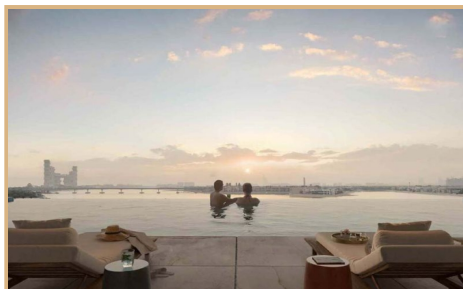
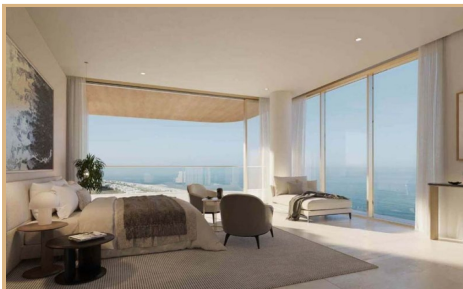
12707 sq ft



TEREZAESTATES.COM

BUY | SELL | RENT

Gallery





TEREZAESTATES.COM

BUY | SELL | RENT





Property Description

Location: Dubai, United Arab Emirates, Palm Jumeirah, Serenia Living

Tereza Estates proudly presents this Full Floor Presidential Penthouse with astonishing endless views of the Skyline of Dubai including The Royal Atlantis, Palm Sea Views and Dubai Marina Skyline located on the serene west crescent of Palm Jumeirah.

This Luxury Presidential Penthouse spreads over massive full floor area of 12707 sq.ft. and includes a private lift lobby with its dedicated floor access with welcoming ambient music being a true definition of exclusivity and privacy for selected few.

An eclectic space designed to embrace the Palm Jumeirah's serene living at the very exclusive resort like private beachfront residence with enormous indoor-outdoor living and entertainment spaces offering absolutely spectacular panoramic views embraced by floor to ceiling glass windows, double height ceilings and private outdoor jacuzzi at the terrace overlooking The Royal Atlantis as the cherry on the top.

Elegant touches of the highest pedigree of interior designs and finishes, this full floor penthouse comprises of four ensuite bedrooms of generous layouts and private outdoor terraces, master suite offering his and her's spacious walk in closets to keep things tidy and interesting.

Residents will enjoy exclusive access to private beach with beautifully designed massive infinity swimming pool and lap pool, lush green gardens throughout the community with many charming water features that leave you in a complete awe of serenity and truly touch your soul.

Concierge services and premium first class amenities that evoke a greater sense of wellbeing as private spa treatment room and massive gym and yoga area overlooking the endless sea views with private rooms for trainings to name a few. Business centre and resident lounges, massive welcome lobby areas, exclusive access to The Reserve Owner's Club, private Rolls-Royce chauffeur services and bespoke a la carte services.

Trakheesi Permit #2051709390

Estimated Completion Date: Q2 2025



Key Features

- ✓ For Sale
- ✓ Built in Wardrobes
- ✓ Maid Service
- ✓ Security
- ✓ View of Water
- ✓ Concierge
- ✓ Private Garden
- ✓ Shared Spa
- ✓ Floor Area : 12707 sq ft
- ✓ Children's Play Area
- ✓ Pets Allowed
- ✓ Shared Pool
- ✓ Balcony
- ✓ Kitchen Appliances
- ✓ Private Jacuzzi
- ✓ Partly furnished
- ✓ Covered Parking
- ✓ Private Gym
- ✓ Study
- ✓ Central A/C
- ✓ Maids Room
- ✓ Shared Gym

